

Commission for Adult Learners

2016-17 Access and Affordability Task Force

Jo Anne Carrick, D. Ed.
Campus Director and CAO,
Shenango



PennState

Hendrick Best Practices for
Adult Learners Conference

May 9, 2017

Members of Task Force

- Jo Anne Carrick - Director/CAO Shenango - Chair
- Beth Seymour - Associate Professor, English, Altoona - Co-chair
- Julie Cross - Analysis and Planning Consultant - OAR
- Brooke Repine - Financial Aid Coordinator
- Kelly Austin - Chancellor, Schuylkill
- Elizabeth Wright - DAA, Hazelton
- Kristen Woolever - Chancellor, Brandywine
- David Smith - Associate Dean for Advising and DUS
- Renata Engel - Vice Provost for Online Education
- Daad Rizk - Financial Literacy Manager
- Paula Milone-Nuzzo - Dean, College of Nursing



Access and Affordability Task force 2014 -2016

- Imperative of President Barron
- Identification of Barriers
- Financial Literacy Needs



Full time vs Part time Attendance

- Majority of Adults attend part time
- Increase cost of attendance for part time students
 - >\$20,000 based on 18 credits/semester
 - > \$15,000 based on 15 credits/semester
- Financial Challenges
 - Need loans to cover living expenses while in school
 - Unable to graduate because they run out of money



- How can we impact on financial burden?
 - Is there a new tuition model for part time students that would mitigate the increased cost of attendance for part time adult students?



Part time Tuition Models

Option #1

- Develop a back end PaSSS program for part time students to incentivize completion.

Option #2

- Expand the current financial aid funds that target graduating students from one semester to the last 2-3 semesters. Build these funds up working with donor relations.

Option #3

- Develop a sliding scale cost structure for the last 30 or so credits.

90-99 one price

100-109 a lower price

110-120 the lowest price

Option #4

- Add to Option #3 an additional bonus at the end as an added incentive.

Option #5

- 30/60/90/120 thresholds – 3 credit course free

Option #6

- Part time students buy a full time semester credit package – 18 credits at FT rate and must take within 3 semesters – non refundable

Option #7

- Once a part time student reaches 90 credits the last 30 credits are paid at a “Part time Fast track” cost not to exceed the cost of two full time semesters.

Option #8

- Add a tuition lock after a student enters a major to Option #1. This will add more structure and additional incentive to the model.

Where is the concentration of part time students?

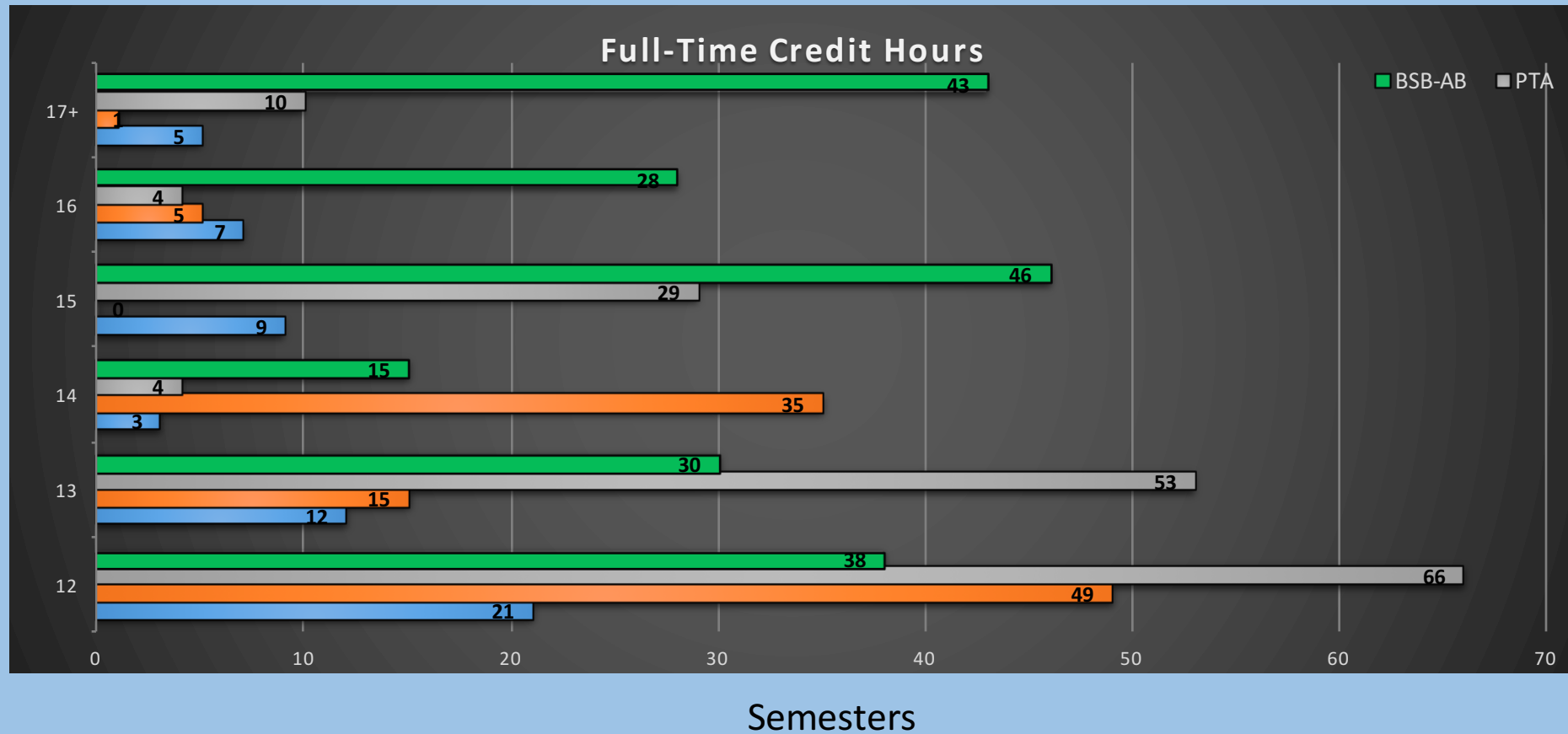
What majors have the highest enrolled part time students?

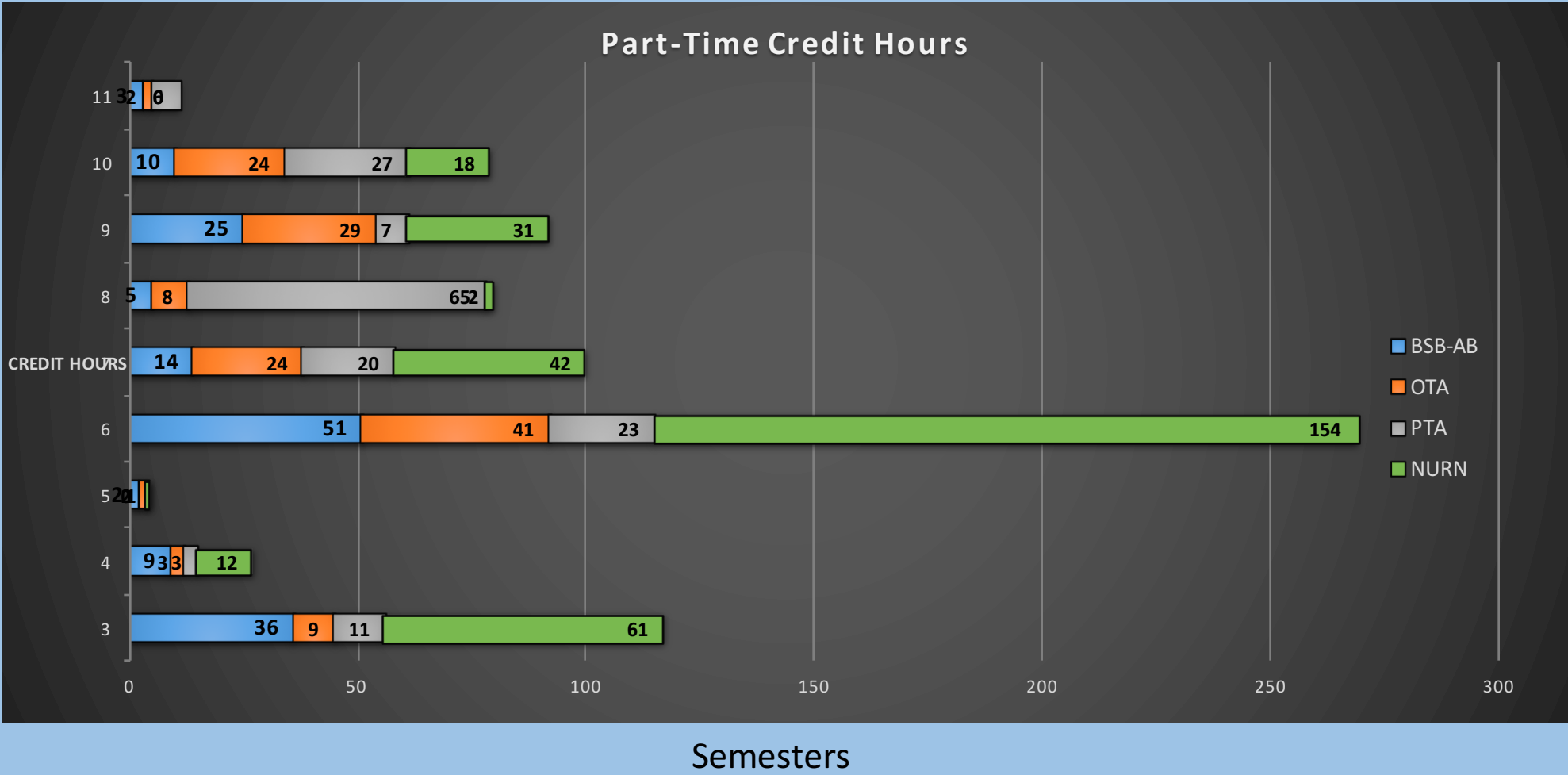
What are the part time student attendance patterns?

- Where: World Campus, Commonwealth Campuses/College – Shenango, Abington
- Highest volume in a Baccalaureate Degree: NURN, BSB, PSYCHOLOGY
- Highest volume in an Associate Degree: OTA, PTA, LAS



Shenango – NURN, OTA, PTA and Abington – BSB AY – 2013-14, 2014-15, 2015-16





What did we learn?

- Majority PT students transfer 60 or more credits
- Attendance patterns are mixed with full time and part time semesters with a majority taking 6 credits but increasing to 12 or more credits towards the end of their degree.

NOTE: only one student took the entire 120 credits part time

- Given the variation of attendance, changes to the tuition model would offer challenges for consistency



What Else Can We Do?



PennState

Hendrick Best Practices for
Adult Learners Conference

May 9, 2017

Final Recommendations of the Task Force

- Continue Data Analysis – Part time UP students
- Holistic Approach to Student Success: Financial, Academic, and Career
- Increase financial literacy directed part time attendance costs and complexity of financial aid eligibility limitations
- Collaborate with Office of Undergraduate Education’s existing initiatives
 - OIA – Study of undergraduate student completing 91 credits or more and doesn’t graduate
 - Financial Aid - “Strategic Intervention: Bridging the Intersection of Student Academics and Student Aid Eligibility”
 - OUE- “Complete Penn State – a Micro Grant Program”
- Advocate for increased University Loan and Philanthropic funding to help adult part time students.



Penn State Financial Literacy & Wellness Center

Daad A. Rizk, Ed.D.

Director, PSU FL&W Center

11- D Grange Building, University Park

<https://financialliteracy.psu.edu/>

finlit@psu.edu



PennState

Hendrick Best Practices for
Adult Learners Conference

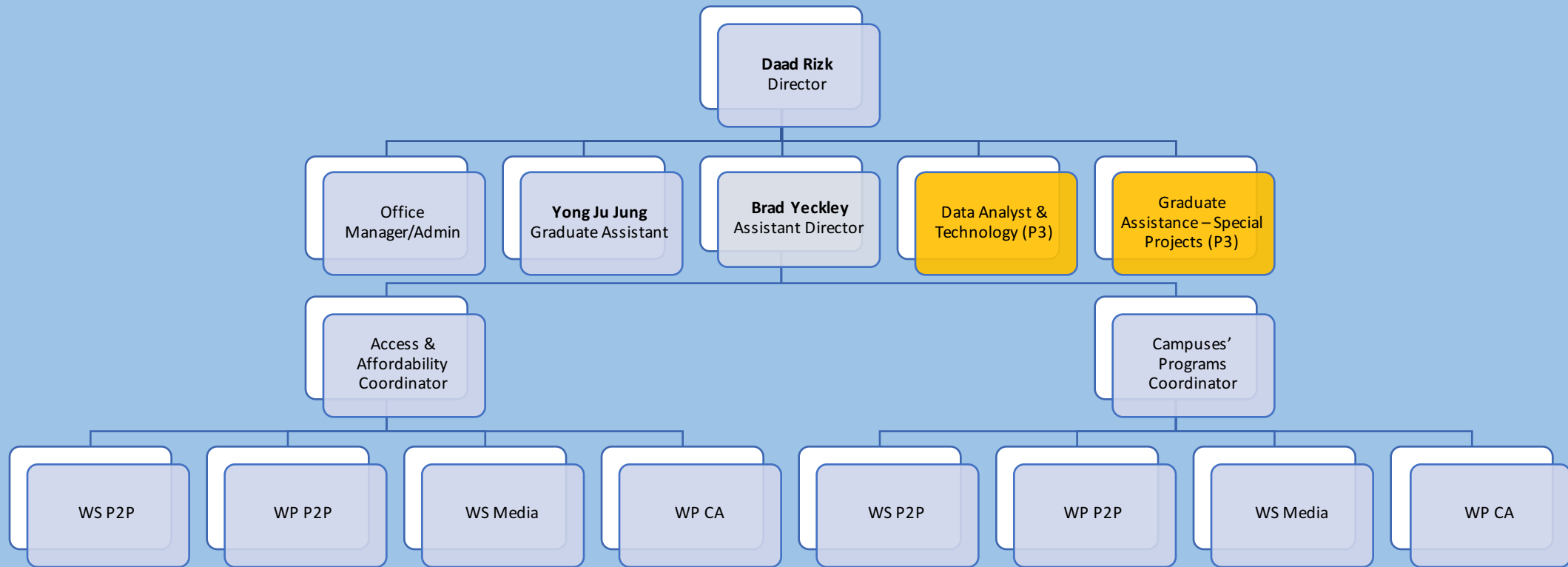
May 9, 2017

Timeline

- Center was approved October 6, 2016
- Official date: July 1, 2017
- Location: Grange Building, University Park
- Division: DUS – Division of Undergraduate Studies



Financial Literacy & Wellness Center Division of Undergraduate Studies (DUS)



Services

- Request a session (workshop, webinar, presentation, freshmen seminar, class, group meeting, etc.,)
- Request one-on-one meeting (in person & virtual)
- Request peer-to-peer services
- Self-Study Modules
 - Canvas
 - Open to public



Website & Modules

- <https://financialliteracy.psu.edu/>

